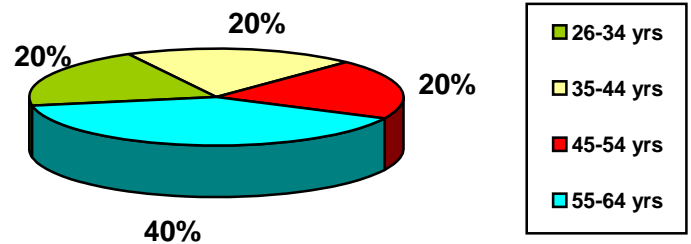


**Wyoming
(n = 6)¹**

- Sixty percent of the social work respondents in Wyoming are 45 years or older.

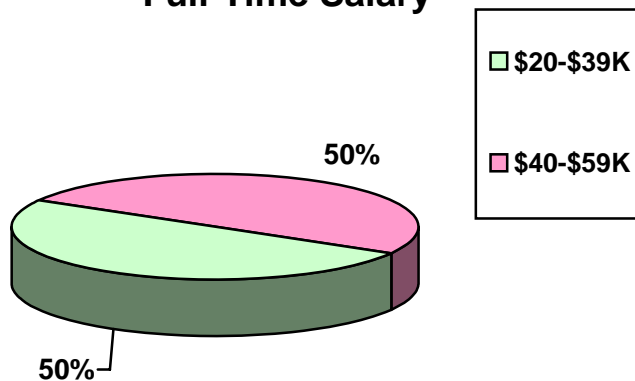
Age

- Eighty percent of social workers in Wyoming are white.



- The majority of Wyoming social workers hold a master's degree as their highest social work degree (80%). Twenty percent hold a bachelor's degree.

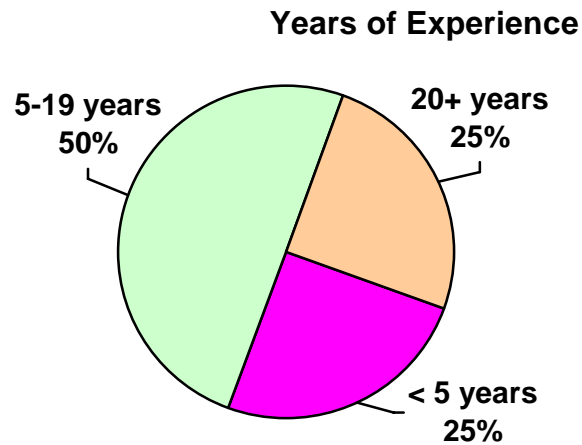
Full-Time Salary



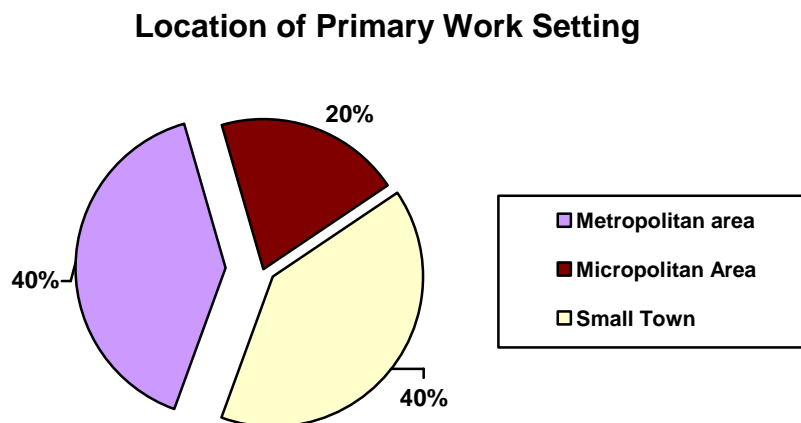
- The salaries for social workers in Wyoming were equally split between two categories—those earning between \$20,000 and \$39,000 per year, and those earning between \$40,000 and \$59,000 annually (50% each).

¹ This information is based on the results of the 2004 NASW National Survey of Licensed Social Workers. The total number of responses received was 4,487. Six (6) respondents were from the state of Wyoming.

- Half of social workers responding in Wyoming have five to 19 years of experience. Twenty-five percent are new to the field, with less than five years of experience.



- Half of Wyoming's respondents are employed in a private non-profit setting.



- Equal percentages (40%) of Wyoming respondents are employed in metropolitan areas and small towns.
- The majority of Wyoming respondents identified Mental Health as their primary area of practice.

¹ This information is based on the results of the 2004 NASW National Survey of Licensed Social Workers. The total number of responses received was 4,487. Six (6) respondents were from the state of Wyoming.