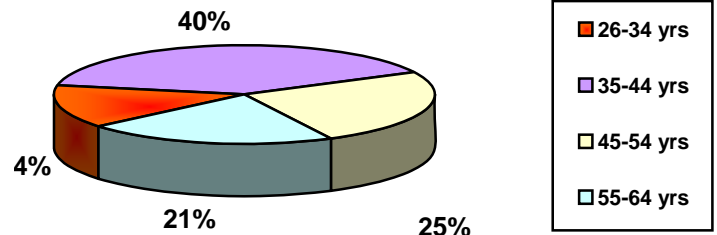


**Missouri  
(n = 27)<sup>1</sup>**

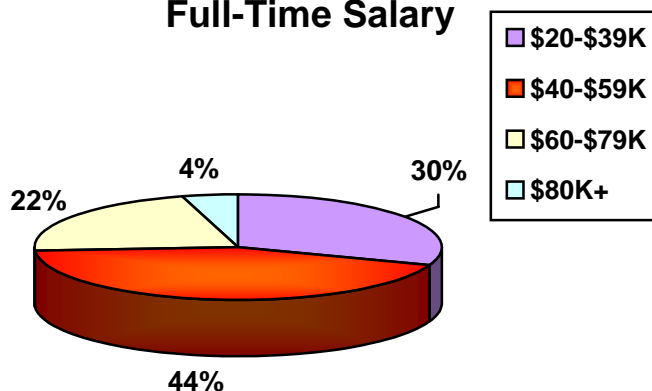
**Age**

- The majority of Missouri's social work respondents are between 35 and 54 years old (65%).
- The overwhelming majority (92%) of respondents in Missouri are white. Four percent are black.



- The majority of respondents in Missouri hold a master's degree as their highest social work degree (84%). Twelve percent hold a doctorate.
- Respondents were asked to identify their primary practice setting for employment. The two most frequently cited categories were hospitals/medical centers (22%) and private solo practice (16%).

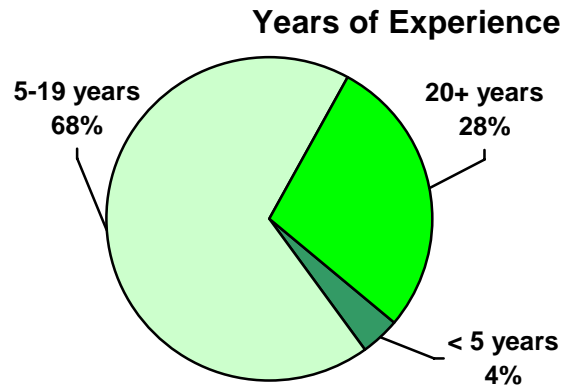
**Full-Time Salary**



- The majority of Missouri's respondents (44%) earn between \$40,000 and \$59,000 annually for full-time social work.

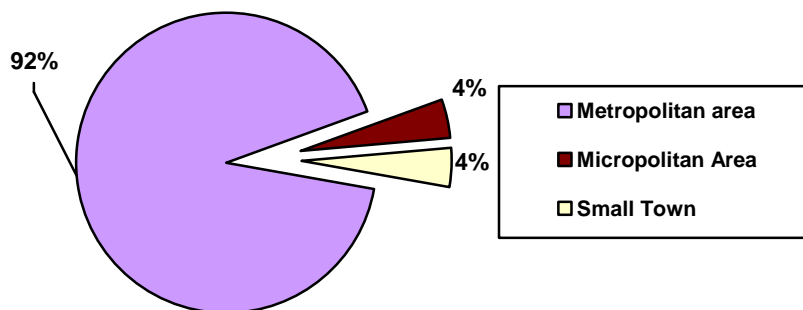
<sup>1</sup> This information is based on the results of the 2004 NASW National Survey of Licensed Social Workers. The total number of responses received was 4,487. Twenty-seven (27) respondents were from the state of Missouri.

- The majority of social work respondents in Missouri have five to 19 years of experience (68%). Only four percent are new to the field, with less than five years of experience.



- The majority of Missouri's respondents are employed in the private sector in either non-profit (44%) or for-profit settings (33%).

**Location of Primary Work Setting**



- The majority of social work respondents in Missouri are employed in a metropolitan area (92%).
- The majority (44%) identified Mental Health as their primary practice area, followed by School Social Work (11%), and Child Welfare/Family (11%).

<sup>1</sup> This information is based on the results of the 2004 NASW National Survey of Licensed Social Workers. The total number of responses received was 4,487. Twenty-seven (27) respondents were from the state of Missouri.